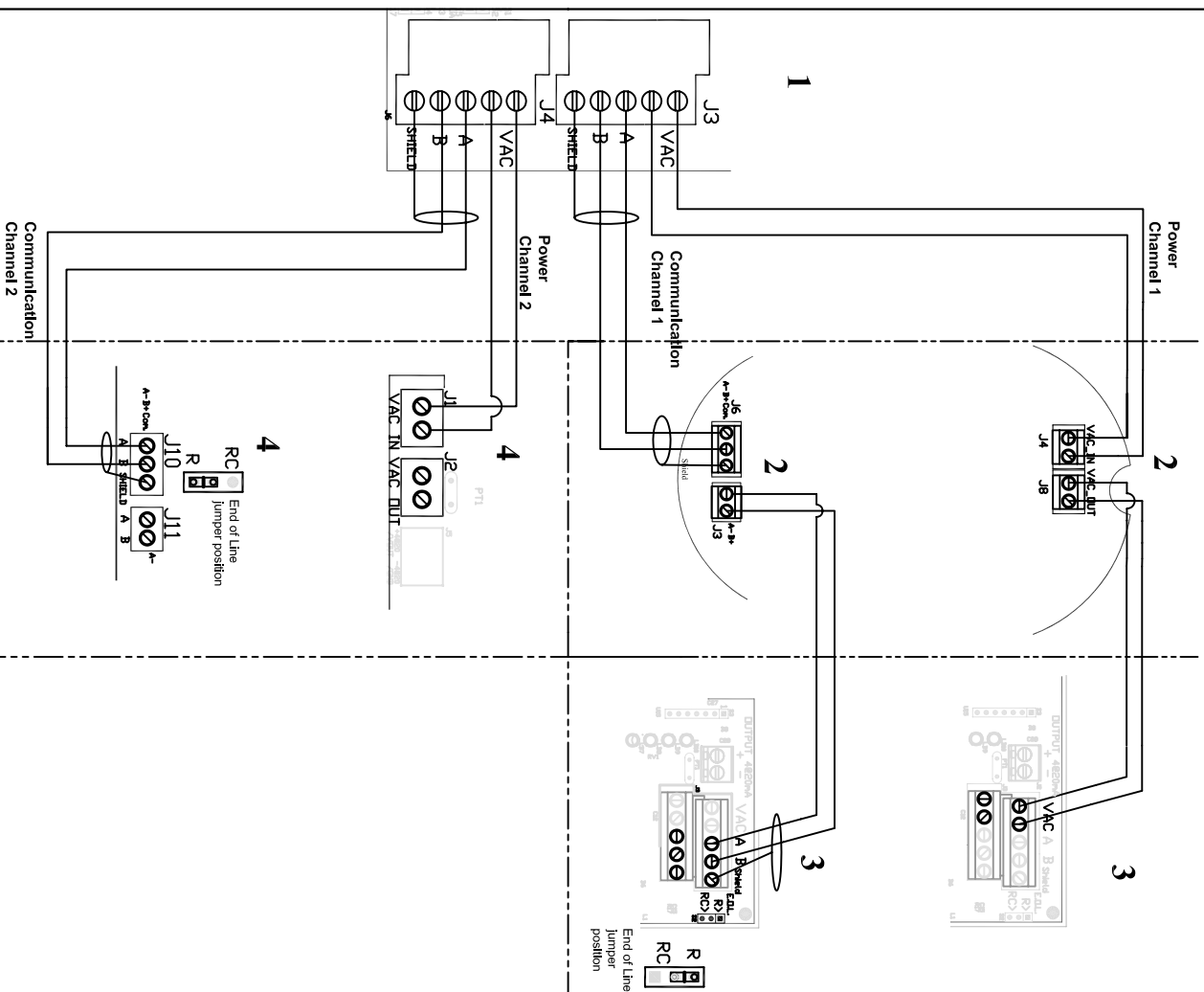
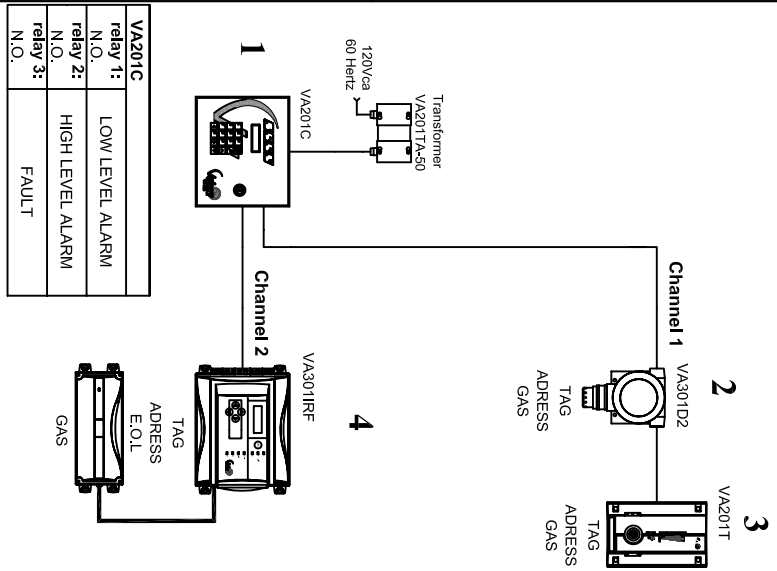
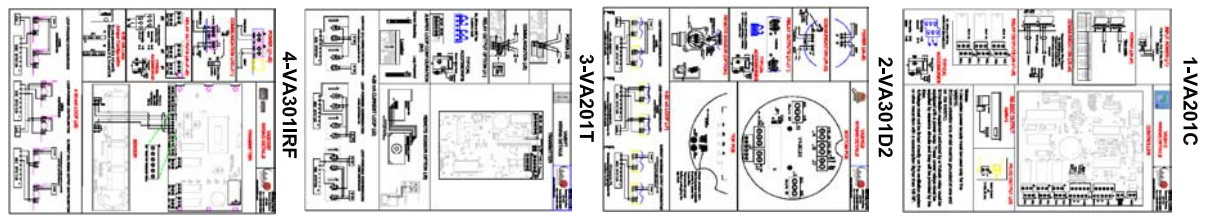


# TYPICAL NETWORK DETAILS

## TYPICAL NETWORK



## SPECIFIC WIRING DETAILS SHEETS



See wiring details on added sheets.  
Consult user's manual for more instructions details.  
Each Vulcain product must be easily accessible for their service.

Type of gas:	GAS1	GAS2	GAS3	GAS4	GAS5
Low level alarm:	LLA	LLA	LLA	LLA	LLA
High level alarm:	HLLA	HLLA	HLLA	HLLA	HLLA

Project: \_\_\_\_\_  
Client: \_\_\_\_\_  
Drawing number: \_\_\_\_\_ Date: \_\_\_\_\_  
Rev. \_\_\_\_\_ Drawn by: \_\_\_\_\_  
# Command: \_\_\_\_\_ Page: \_\_\_\_\_

4005 Matte, Local G,  
Brossard, Québec,  
J4Y 2P4  
Tel.: (450) 619-2450  
Fax.: (450) 619-2525  
www.vulcaininc.com